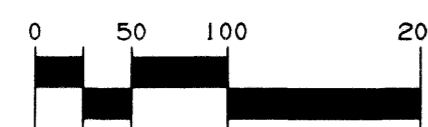
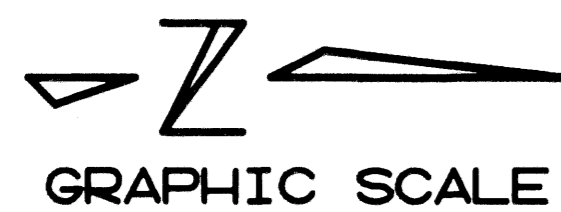
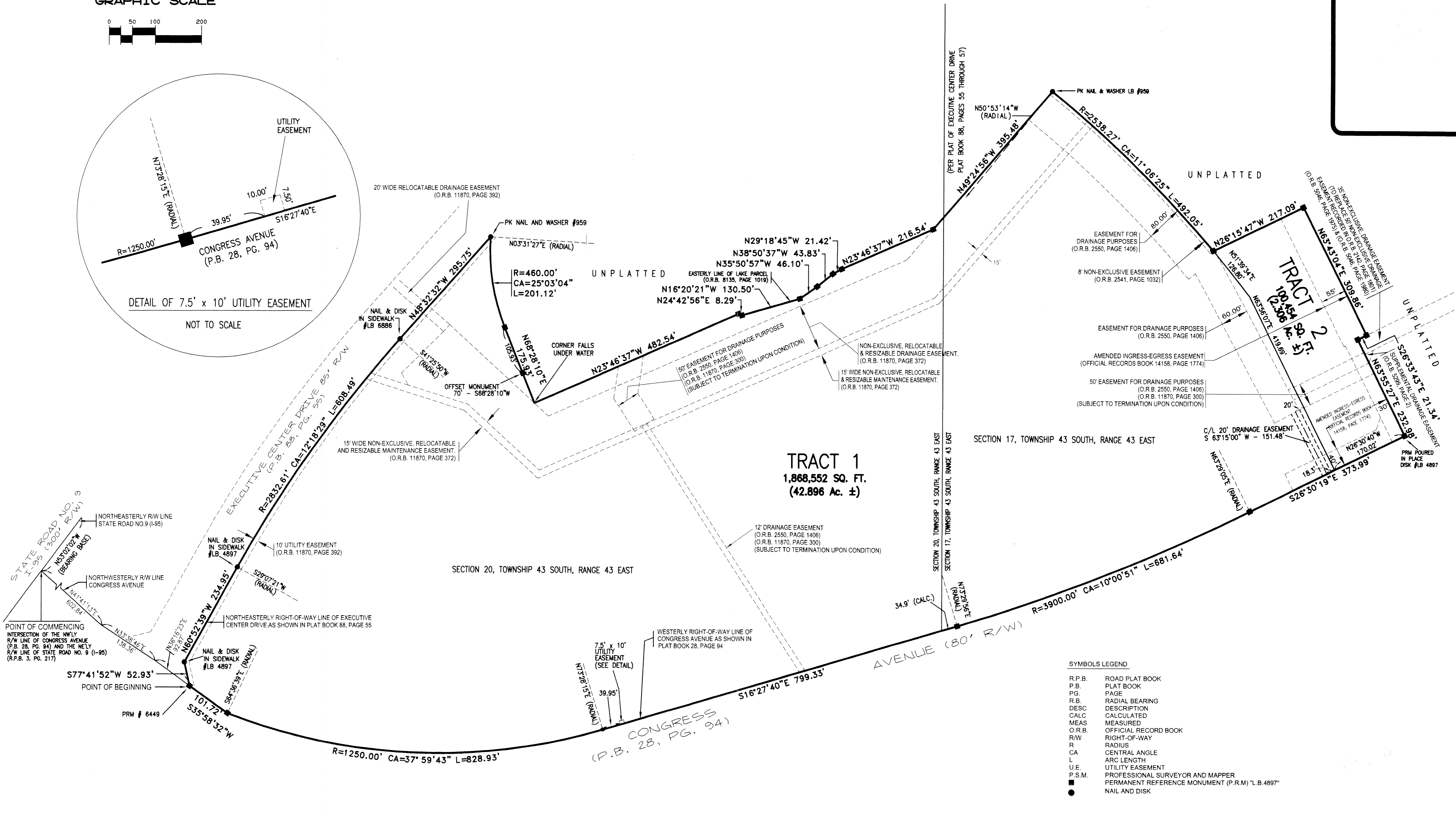


# PARCEL 41

A PARCEL OF LAND LYING IN SECTIONS 17 AND 20, TOWNSHIP 43 SOUTH, RANGE 43 EAST, CITY OF WEST PALM BEACH, PALM BEACH COUNTY, FLORIDA.  
SHEET No. 2 OF 2 DECEMBER 2003



DETAIL OF 7.5' x 10' UTILITY EASEMENT  
NOT TO SCALE



SYMBOLS LEGEND

R.P.B.	ROAD PLAT BOOK
P.B.	PLAT BOOK
PG.	PAGE
R.B.	RADIAL BEARING
DESC.	DESCRIPTION
CALC.	CALCULATED
MEAS.	MEASURED
O.R.B.	OFFICIAL RECORD BOOK
R/W	RIGHT-OF-WAY
R	RADIUS
CA	CENTRAL ANGLE
L	ARC LENGTH
U.E.	UTILITY EASEMENT
P.S.M.	PROFESSIONAL SURVEYOR AND MAPPER
■	PERMANENT REFERENCE MONUMENT (P.R.M.) "L.B. 4897"
●	NAIL AND DISK

**Keshavarz & Associates, Inc.**  
 CONSULTING ENGINEERS - SURVEYORS  
 711 N. Dixie Highway, Suite 101  
 West Palm Beach, Florida 33401  
 Tel: (561) 689-8600 Fax: (561) 689-7476 LB 4897  
 THIS INSTRUMENT WAS PREPARED BY MANUEL A. GUTIERREZ, PSM  
 PROFESSIONAL SURVEYOR AND MAPPER NO. 4102  
 IN THE OFFICES OF KESHAVARZ & ASSOCIATES, INC.

\\KA\FS\SU\733\_PARCEL\_41.dwg 733\_PLAT.dwg 11/24/03 10:57:08 AM EST